

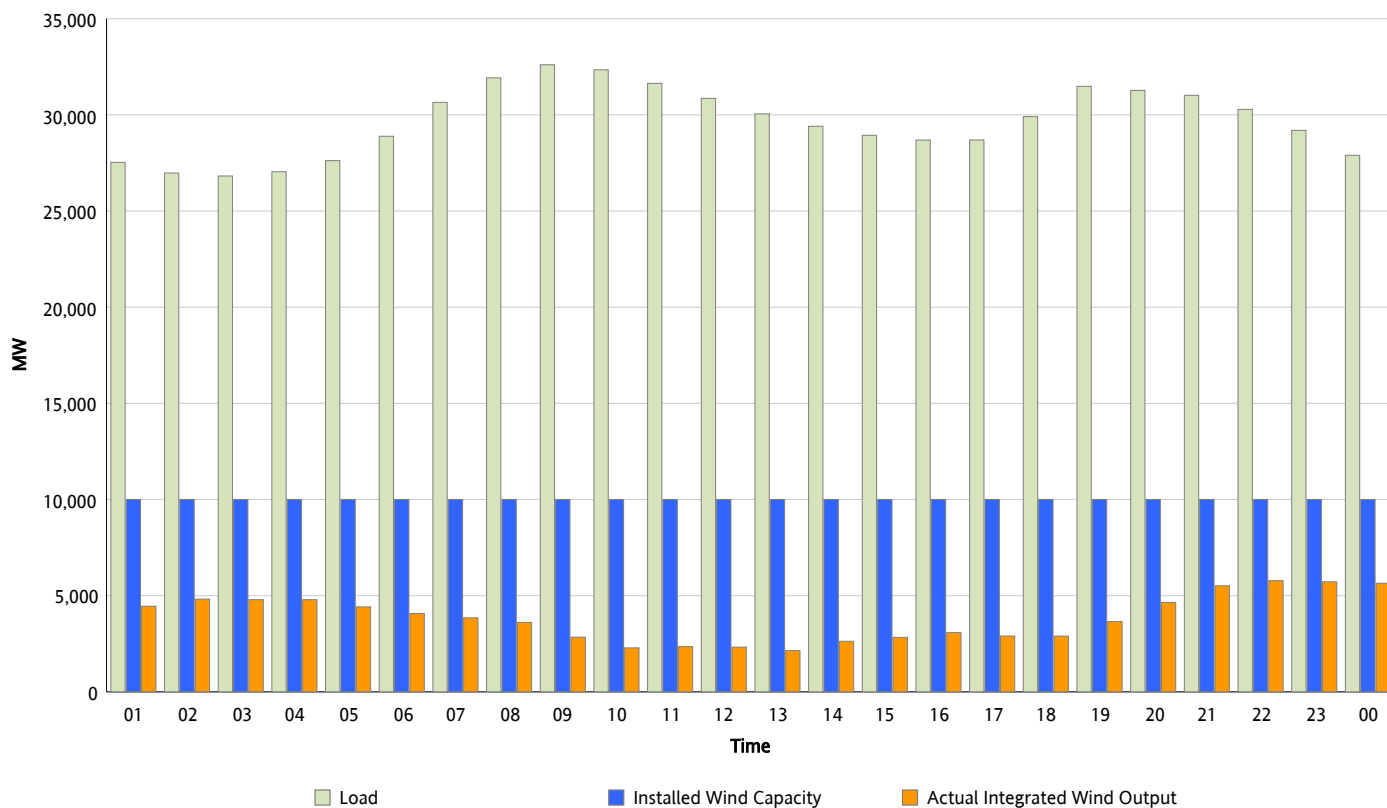


ERCOT Grid Operations

Wind Integration Report : 11/17/2012

Peak Load	32,604 MW
Load Peak Hour (HE)	09
Wind Over Peak	2,843 MW
Wind Record 11/10/12	8,521 MW
Max Wind Value*	5,923 MW
Wind Peak Time	21:01
Wind Integration %	19.37 %

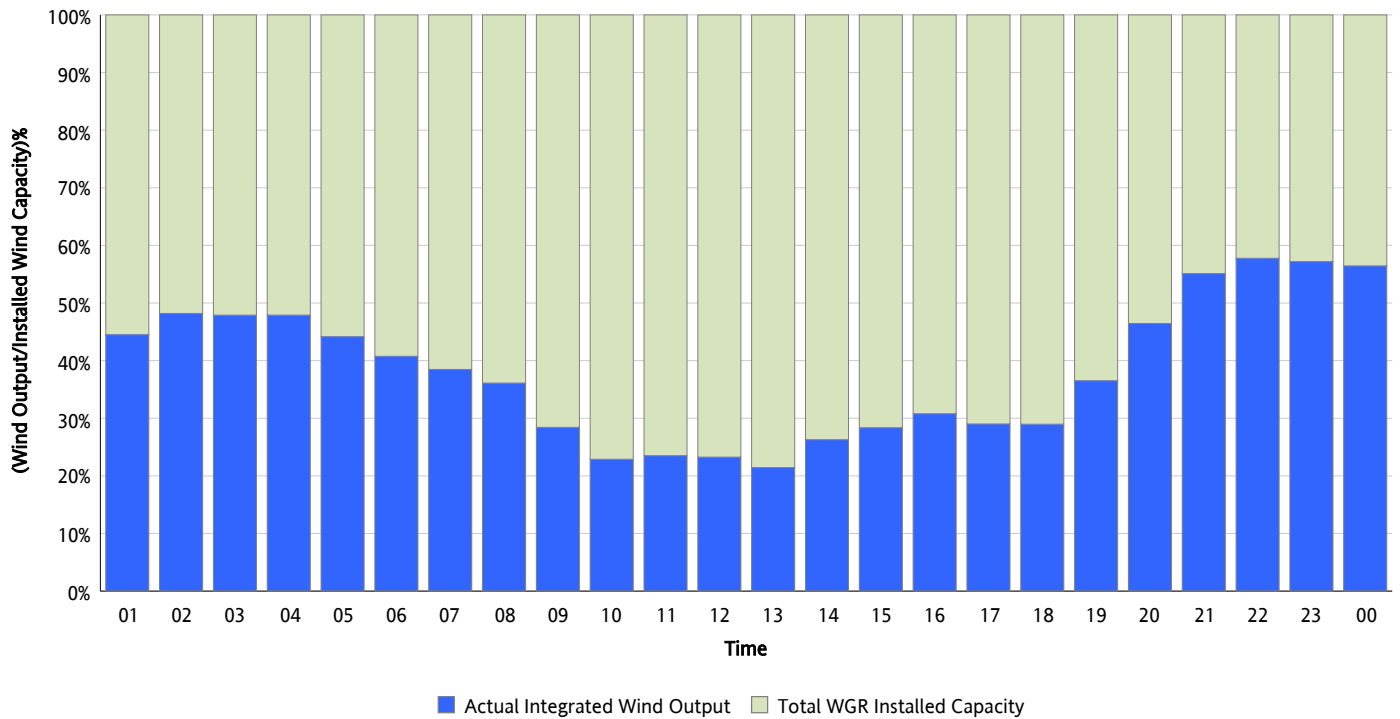
Hourly Average Actual Load vs. Actual Wind Output
11/17/2012



* Wind Record and Wind Max represent instantaneous values and the rest of the values are integrated over the hour

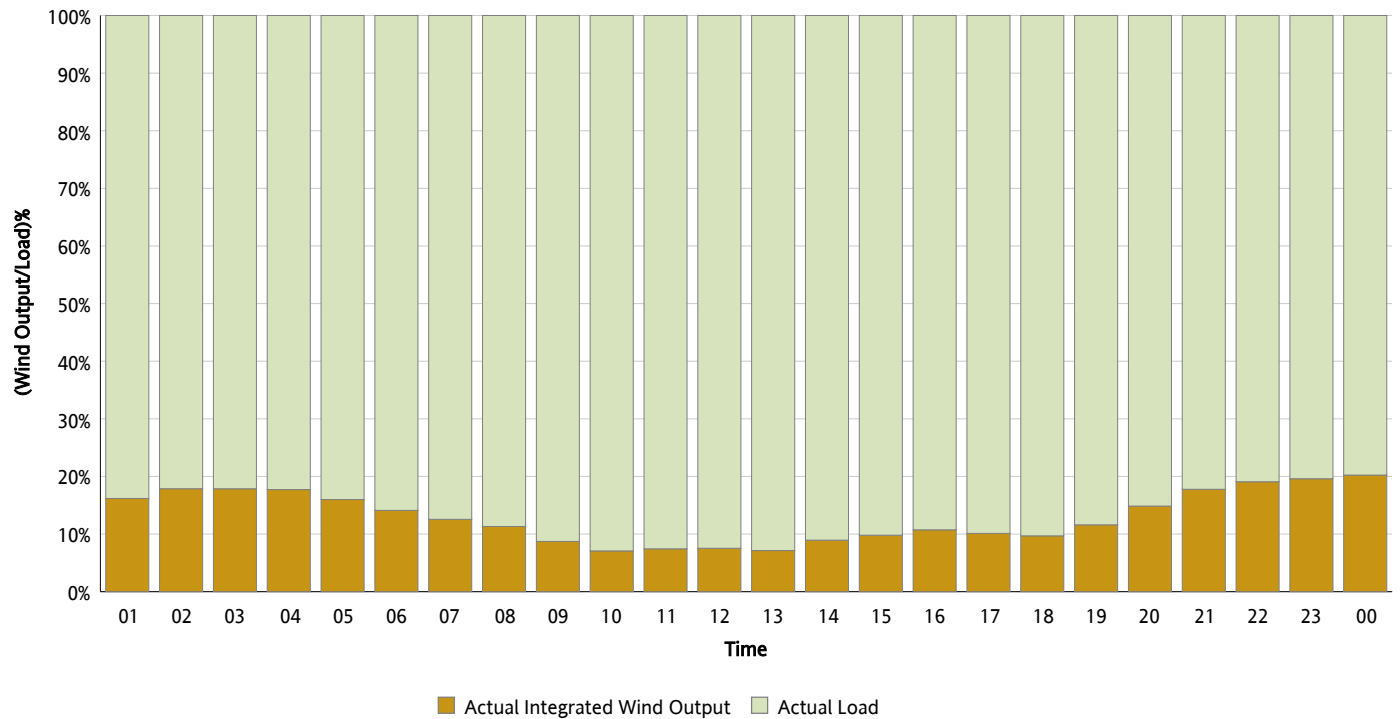
Actual Wind Output as a Percentage of the Total Installed Wind Capacity

11/17/2012



Actual Wind Output as a Percentage of the ERCOT Load

11/17/2012



ERCOT Load vs. Actual Wind Output

11/10/2012 - 11/17/2012

